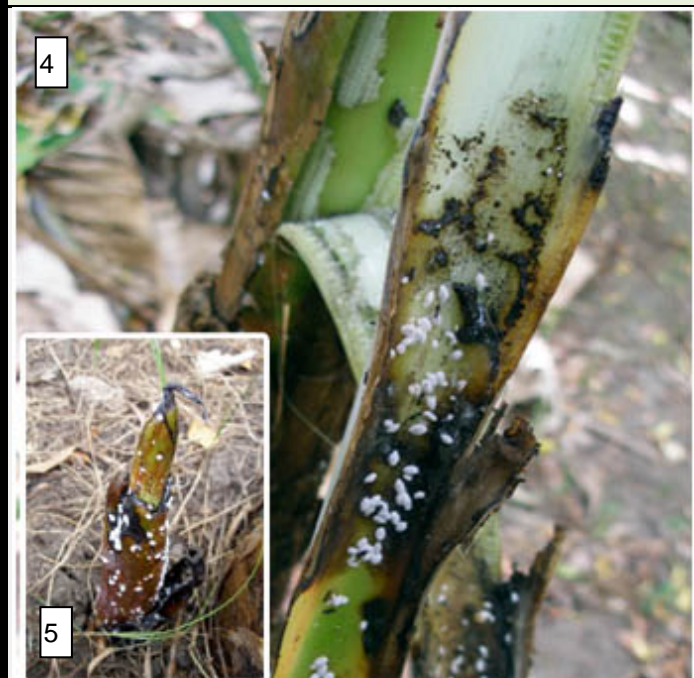


**Banana Mealy bug** <sup>1</sup> *Dysmicoccus neobrevipes*

- Adults appear predominantly grey in colour
- The body is broadly oval shape with short filaments of wax extending from around the margin of the entire body

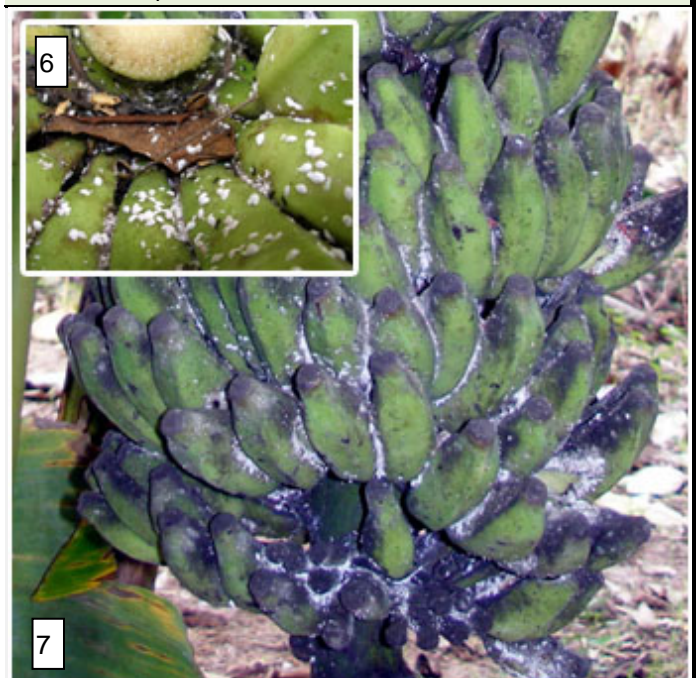
**Damage symptoms on Pseudostem** <sup>2,3</sup>

- External feeding in cell sap of pseudostem causes wilted appearance and less vigour
- Mealybug injection of toxic substances to pseudostem causes patches of discolouration



**Damage inside the leaf sheath & sucker** <sup>4,5</sup>

- This mealy bug is normally found on the aerial parts of its hosts such as leaves, inside petioles, suckers, pseudo-stems, flowers and banana bunches.



**Damage on banana comb & bunch** <sup>6,7</sup>

- The damage is caused by mealy bugs sucking the cell sap and superficial growth of sooty mould.
- This can reduce the quality of the bananas.