

Sunburn on Mango

Recognize the problem

In dry areas, trees can suffer sunburn due to exposure to the sun leading to the fruits becoming stressed. Sunburn can lead to internal damage because the mango flesh is vulnerable. It can be severe and cause economic loss. It may also be due to excess pruning or death of leaves as a result of diseases or insects that defoliate the plant.

Background

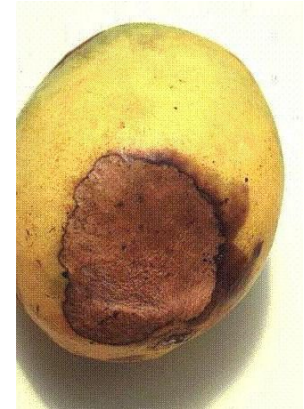
There are varieties of mangoes that offer good foliage cover and are less susceptible to diseases or insects that defoliate. If too many leaves are pruned from the tree, then the fruits are less well shaded and hence more sunlight can get to the fruit.

Management

Non-chemical control

- Grow cultivars that offer good foliage cover.
- Control foliar diseases and leaf-removing insect pests.
- Planting trees in an east-west direction makes the plant less affected; this avoids direct sun rays especially in the afternoon.
- Careful pruning should be done not to over-expose the fruits to extremes of the sun.
- Do not leave harvested fruit in the sun.

Sunburn damage of mango. (Photo by Tom Isakeit)



The recommendations in this factsheet are relevant to: many countries where this pest or problem is present



Authors: This factsheet is based on information written for "The Mango Farming Handbook", first published by KENGAP Horticulture 2011.
 Kengap Horticulture Ltd, P.O Box 12898-00400 Nairobi, Kenya
 tel: +254 722 575544; +254 723 491549 email: books@kengap.co.ke;
 www.kengap.co.ke

Edited by Plantwise.