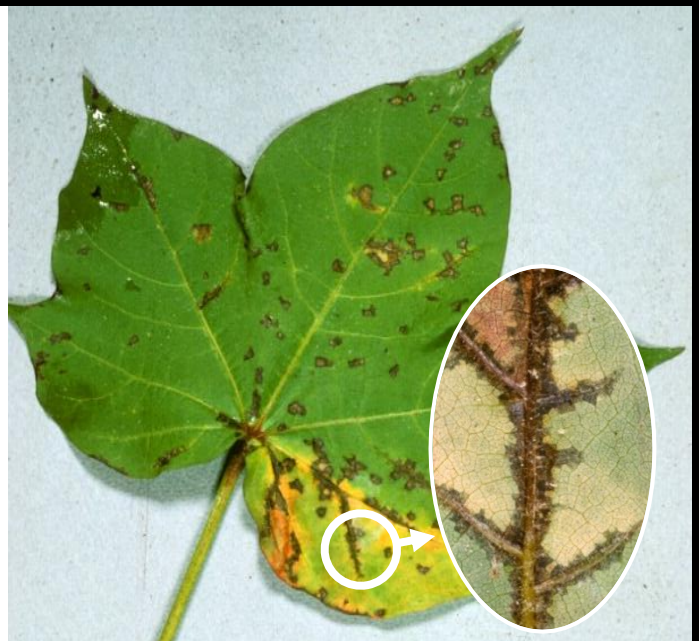




Root knot nematodes
NEMATODE - (*Meloidogyne incognita*)

- Swollen galling of roots
- Accompanied by general plant wilt



Bacterial angular leaf spot
BACTERIA - (*Xanthomonas axonopodis* pv. *malvaceum*)

© Dr Aamir Malik, CABI

- Small angular necrotic leaf lesions
- Can spread along major leaf veins
- Necrosis progresses to stem and bolls
- Development of stem canker



Verticillium wilt
FUNGUS- (*Verticillium dahliae*)

© Dr Aamir Malik, CABI

- interveinal chlorosis or necrosis
- Wilted leaves
- Stem symptoms include discolouration of the internal, vascular tissue



UGA1235169

Bollworm
INSECT - (*Helicoverpa zea*)

© Clemson University - USDA Cooperative Extension Slide Series, Bugwood.org

- Bolls showing large circular bore holes
- Creamy white circular eggs on underside of leaves
- Larvae greenish to brown, attacking the bolls
- Adult moth is about 2cm with a yellowish tan body and brown, green or grey double lines